

REFUEL POINT 1, 2 & 3 (Noojee Service Park)

All Refuel points are located at the Noojee Service Park in refuel 1 & 3 the course will take each crew through the refuel. Refuel 2 is to be conducted during your allotted service time (60min). Service crews do not need to be present during refuel if they wish to use this time to spectate out in the forest.

No refuelling is allowed outside of the designated refuel zone at the Noojee service park

First car starts event	8.30
First VRC car arrives at re-fuel 1	10.04
First VCRS car arrives at re-fuel 1	11.36
First VRC car arrives at service	11.21
First VCRS car arrives at service	12.53
First VRC car arrives at re-fuel 3	14.25
First VRC car enters parc ferm'e	15.42
First VCRS finishes (no parc ferm'e)	15.57

Refuel Distances

	Special Stage	Liaison	Total
Start to Refuel 1	43.10	39.08	82.18
Refuel 1 to service (refuel 2)	34.31	28.23	62.54
Service (Refuel2) to Refuel 3 (VCRS Finish)	43.10	39.08	82.18
Refuel 3 to Finish (VRC)	34.31	28.23	62.54
Event Total VRC	154.82	134.62	289.44
Event Total VCRS	120.51	106.39	226.90
***Note all Refuels (1, 2 and 3) are located at the Noojee Service park			



SERVICE INSTRUCTIONS and REFUEL'S

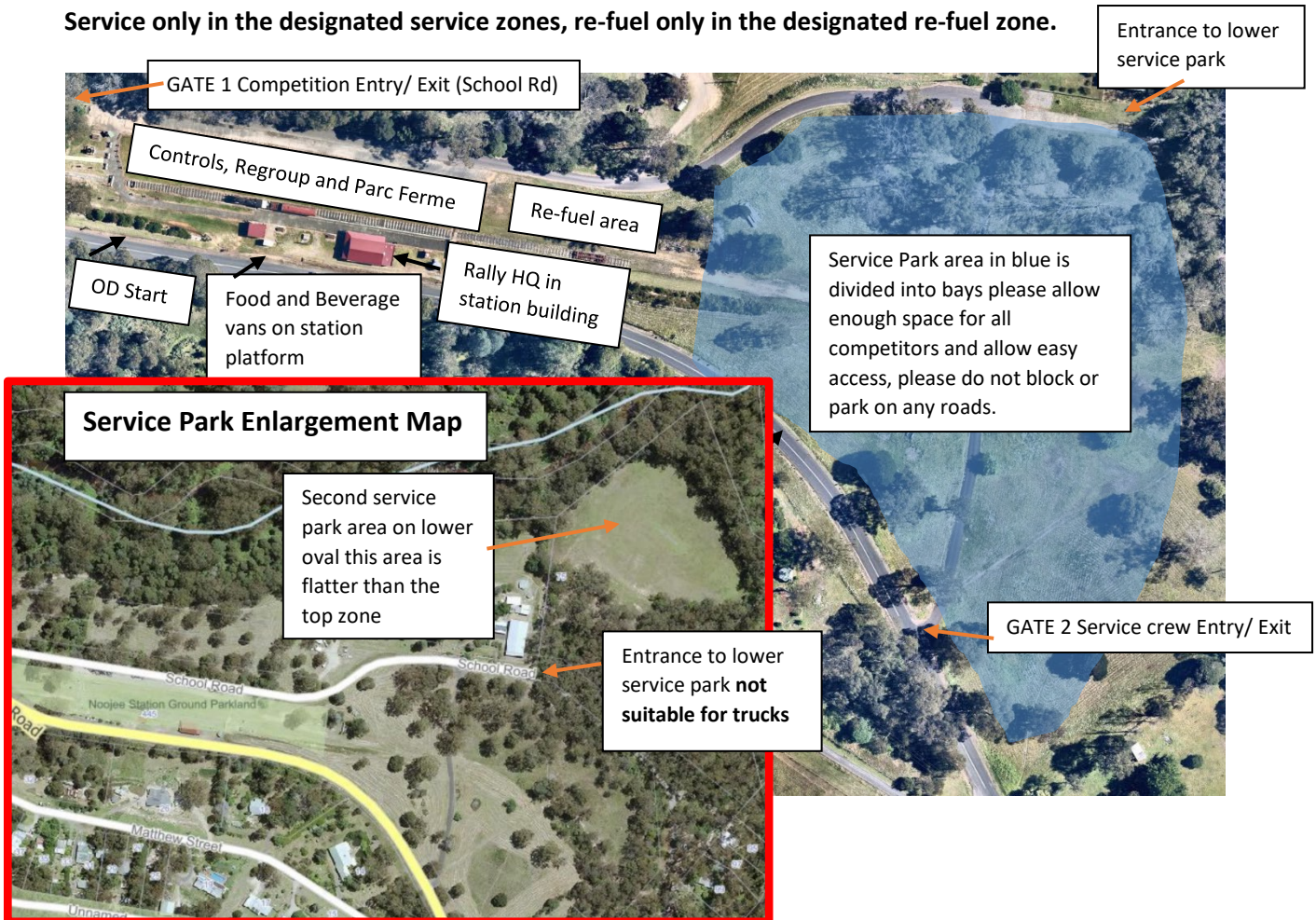
<https://goo.gl/maps/6zLsL2KyNYFMHez39>

The service is located at the rally HQ at Noojee Heritage Centre. It includes the service and all refuels in the one location. The 2023 Ada river rally has no remote refuels or service. Crews will have 60 min to service including refuel. A second service area is on the lower oval with access via a track past the school.

First car starts event	8.30
First VRC car arrives at re-fuel 1	10.04
First VCRS car arrives at re-fuel 1	11.36
First VRC car arrives at service	11.21
First VCRS car arrives at service	12.53
First VRC car arrives at re-fuel 3	14.25
First VRC car enters parc ferm'e	15.42
First VCRS finishes (no parc ferm'e)	15.57

Service Park Speed Limit 10kph

Service only in the designated service zones, re-fuel only in the designated re-fuel zone.



Re-group will occur after the 60min service/ refuel and may be up to 30min.

Control Area Enlargement

